

Water and Sanitation (WASH)

Due to destruction of community service delivery, the organization through various programs seeks to achieve improved quality of life for marginalized groups through access to basic services (such as clean water, sanitation and basic health)



The strategic Interventions in the WASH Program

- ★ Rehabilitation of existing water systems / points and /or construct new ones where necessary.
- ★ Establishment of sustainable management practices through community involvement in management.
- ★ Training the local water committees in proper water use, storage and conservation methods.
- ★ Distribute water tanks for water harvesting and storage for vulnerable households.
- ★ Construction of boreholes and water points to ensure constant water supply.

Health



Health is an area that has continued to be a big challenges to the communities in the target areas.

The strategic Interventions in the Health Program:

- ★ Enhance the access to basic healthcare services access by carrying out regular medical camps to aid the local communities.
- ★ Support in the construction and equipping of community health facilities which can be used to provide sustainable primary healthcare.
- ★ Support health facilities with emergency services through the provision of ambulances vehicle to help with referral cases identified during the medical camps.

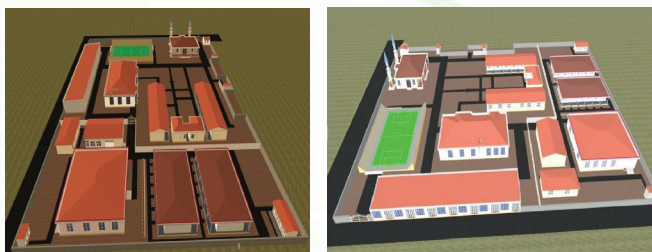
Orphanage and Child Support



The organization is in the process of constructing an orphanage that plans to house 500 children from very poor families.

- ★ Support the orphanage with cloths and food.
- ★ Build Homes for Orphans and Put them in education-program.
- ★ Support the children orphaned because of disease or conflict.

The following is showing the illustration of the proposed future projects for the region;



The institutions to be developed will include;

- ★ Social hall for meetings to house 500 people with kitchen, dining room, toilets.
- ★ Classrooms and boarding facilities to carry 1500 children.
- ★ Teachers Staffroom and 1 office for the head teachers.
- ★ Masjid and playground.
- ★ 2 staffroom and 1 office.
- ★ In the institution, SOC will develop a bore hole which will provide water to the facility. The overall cost of the institution is about 920,000USD.

Contact s +1306- 529-5928
+1647 2326446, +251 906501730
Email:soc.info@shadowofcharity.org



ORGANIZATION Profile



ABOUT THE ORGANIZATION

The Shadow of Charity Africa Organization is a Non-Governmental Organization (NGO) registered in Ethiopia. The purpose of the organization is to provide humanitarian assistance to the communities in the Africa Region (Kenya, Somalia and Ethiopia) through constructive engagement and nurturing progress in the following sectors: Education, Health, Water and sanitation, Nutrition, Projects for the orphans and widows, Humanitarian Aid and the General welfare.

OBJECTIVES

- ★ Promote the accessibility to quality education for all school going children and increase the levels of literacy among adults in pastoralist and nomadic community in the Horn of Africa region.
- ★ Promote the accessibility of quality health and improve life expectancy among the poor pastoralist and nomadic community in the Horn of Africa by bridging the gap health provision gaps at community level.
- ★ Support initiative that seeks to ensure that communities that live in Arid and Semiarid Lands (ASAL) access quality and adequate water for both domestic and animal use.
- ★ Improve the economic livelihood of communities that live in the horn of Africa By supporting women-based enterprises, encourage women production initiative and provision of Business Development Services (BDS).
- ★ Provide conducive and caring homes for orphaned children and assisting them to reach their full life potential through education, skills and talent identification and development.
- ★ Supporting the communities to achieve level food security and sustainable food production by supporting small holder farmers by providing them with farm.

GEOGRAPHICAL FOCUS

Shadow of Charity Africa organization activities and programme focus is in the Africa Region, covering areas of Ethiopia, Kenya and Somalia and can progressively expand its activities in the Horn of Africa region including Sudan and South Sudan.

OUR PROGRAMMES AREA

The Organization Programs are grouped into 7 key components and thematic areas that including Education, Health, Water and Sanitation (WASH), Economic Empowerment, Orphanage, Agricultural development and Food and Nutrition.

Education Program

The organization objectives is in response to the high levels of illiteracy in the region by



- ★ Building of infrastructure, capacity building programs for teachers and education officials, and school management teams.
- ★ The organization has initiated school retention program which include.
- ★ Issuing of learning materials and the implementation of school feeding programs especially for children in primary school from vulnerable communities.
- ★ The organization strives to promote the right to education for both girls and boys including supporting Inclusive Education.

Economic Development

Shadow of Charity (SOC) will in the future look at the possibility of funding to enhance and support the economic wellbeing of its people by:



- ★ Supporting women through business development services to enable them start small business.
- ★ Training women and youth in business skills and financial knowledge such as weaving, bead and necklaces making.
- ★ Providing marketing support services for product marketing for women and youthbased enterprises to enable them sell theirwares.
- ★ Supporting and empowering women and youth to practice table banking, revolving funds, intergroup savings and borrowing at the villagelevels.

Agricultural Development



The organization through its agricultural development programs seeks to;

- ★ Empower the local communities on the modern and alternative farming (crops and animal production) and economic activities (crop and fish farming) methods
- ★ Support farmers with farming inputs (fertilizers and seedlings – which are more drought resistant)
- ★ Empower the communities on the value addition production
- ★ Build capacities of the local communities in maximization of land use to improve production and hence livelihood